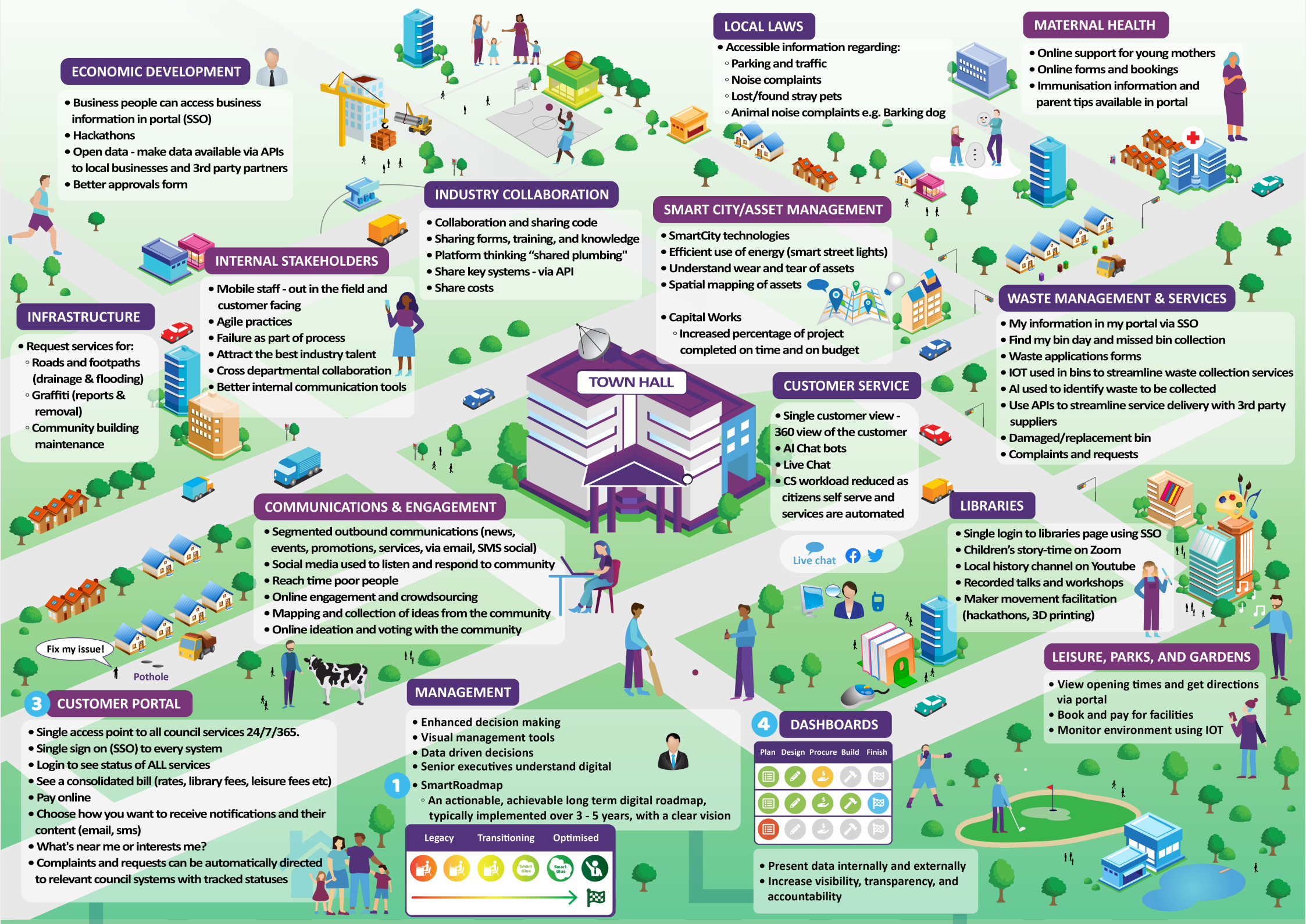
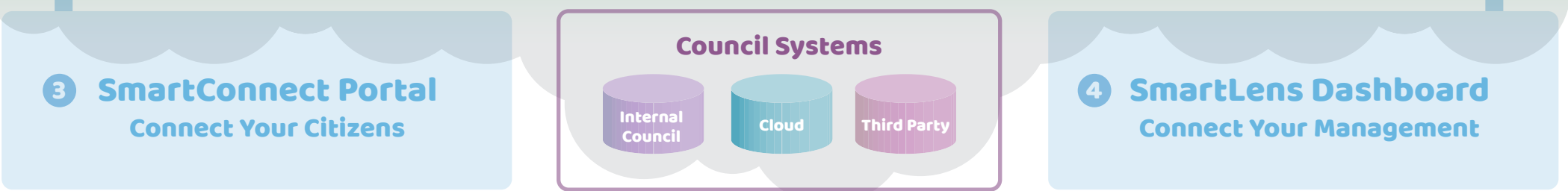


The Digital Council



2 SmartGlue - Connect Your Systems



The Four (Big) Steps to Digital Transformation

- 1 Assess your digital maturity and develop a plan (SmartRoadmap)**
- 2 Connect your systems with glue (SmartGlue)**
- 3 Connect your citizens via a portal (SmartConnect)**
- 4 Connect your management to information with dashboards (SmartLens)**

symphony3
simple connected customer experiences

www.symphony3.com
@symphony3think



Want your own branded version of this infographic? Contact Symphony3